



# Battery Types 101

## A Beginner's Guide

This comprehensive guide will help you understand the world of energy storage and make informed decisions about battery selection and appliance scheduling for your renewable energy systems.

### Part 1: The Language of Batteries: Key Metrics Explained

When shopping for a solar battery, you'll encounter a few technical terms. Understanding these is crucial to choosing a system that meets your needs for backup power and daily use.

#### 1. Capacity (kWh)

**What it is:**

The total amount of energy the battery can store, measured in kilowatt-hours (kWh).

**Consumer Takeaway:**

This determines how long the battery can power your home. A typical home might use 2-4 kWh overnight, so a 10 kWh battery could theoretically power essential loads for 2-3 nights [1].

#### 2. Power Rating (kW)

**What it is:**

The maximum amount of electricity the battery can deliver at any single moment, measured in kilowatts (kW).

**Consumer Takeaway:**

This determines what appliances you can run simultaneously. If your battery has a 5kW power rating, you can run a combination of appliances that total up to 5 kW at once. If you want to run an air conditioner or a well pump, you need a high power rating.

### 3. Depth of Discharge (DoD)

**What it is:**

The percentage of the battery's capacity that can be safely used before it needs to be recharged.

**Consumer Takeaway:**

Modern lithium-ion solar batteries typically have a DoD of 90% to 100% [2]. This means if you have a 10 kWh battery with a 90% DoD, you can safely use 9 kWh of that stored energy. A higher DoD is better, as it means more usable energy.

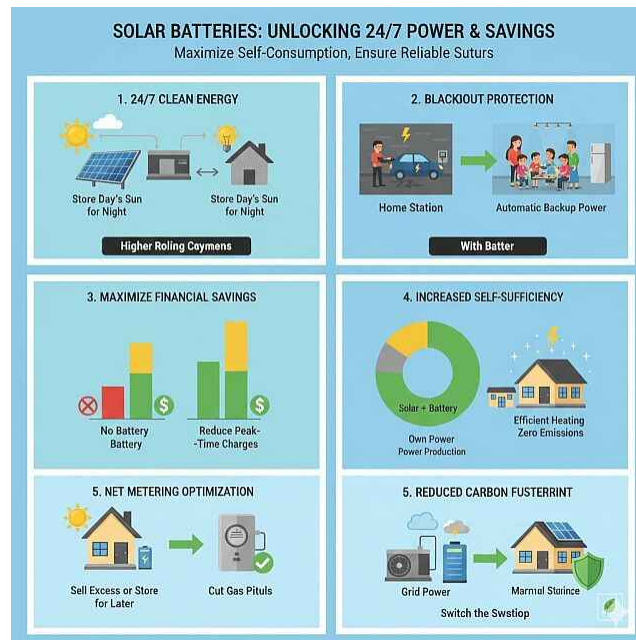
### 4. Round Trip Efficiency (RTE)

**What it is:**

The percentage of energy put into the battery that you can get back out.

**Consumer Takeaway:**

RTE accounts for energy lost during the charging and discharging process (usually as heat). A battery with an 80% RTE means that for every 10 kWh you put in, you only get 8 kWh back out [3]. Modern lithium-ion batteries often boast RTEs of 90% or higher.



## Part 2: The Core Decision: Battery Chemistry

The residential solar storage market is dominated by lithium-ion technology,  
but even within that category,  
there are two main chemistries you need to know about: **NMC and LFP**.

Feature	NMC (Nickel Manganese Cobalt)	LFP (Lithium Iron Phosphate)
Energy Density	Higher (Stores more energy in a smaller, lighter package).	Lower (Requires a larger, heavier package for the same energy).
Safety Thermal Stability	Lower thermal runaway threshold; relies on sophisticated cooling management systems.	Higher thermal stability; considered inherently safer and more robust against overheating.
Cycle Life	Good (Typically 6,000 to 10,000 cycles).	Excellent (Often higher cycle life, sometimes exceeding 10,000 cycles).
Cost	Generally more expensive due to raw material costs (Nickel, Cobalt).	Generally, less expensive due to lower-cost, more abundant raw materials (Iron, Phosphate).
Market Trend	Used by some major brands for its high energy density.	Rapidly becoming the industry standard for residential storage due to safety and longevity.

### The Consumer Takeaway:

While NMC batteries offer a higher energy density (meaning a smaller box on your wall),

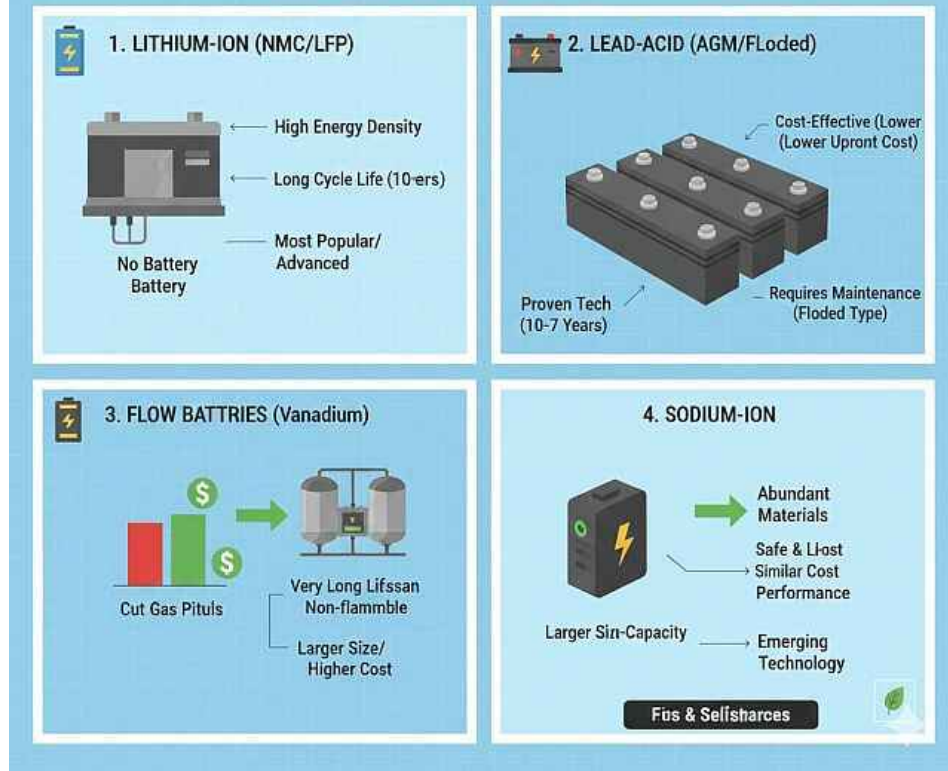
LFP batteries are increasingly preferred for home use due to their superior safety profile, longer cycle life, and lower cost.

For a stationary home application, the slight difference in size is often outweighed by the benefits of LFP's robustness and longevity.



## CHOOSING THE RIGHT POWERHOUSE: SOLAR BATTERY TYPES EXPLAINED

Key Differences in Tech, Cost & Performance



## Types of batteries:

### 1. Lead-Acid Batteries

- **Description:** Lead-acid batteries are one of the most common types of batteries used in renewable energy systems.
- **Characteristics:**
  - Low cost
  - High self-discharge rate (up to 20% per month)
  - Limited depth of discharge (DOD)
  - Short lifespan (typically 3-5 years)
- **Use cases:** Starting cars, backup power for small systems, and charging smaller solar panel arrays.

## 2. Lithium-Ion Batteries

- **Description:** Lithium-ion batteries are widely used in portable electronics and electric vehicles.
- **Characteristics:**
  - High energy density
  - Low self-discharge rate (less than 1% per year)
  - High DOD (typically up to 80%)
  - Higher cost compared to lead-acid batteries
- **Use cases:** Portable power systems, electric vehicles, and large-scale renewable energy applications.

## 3. Nickel-Metal Hydride Batteries

- **Description:** Nickel-metal hydride batteries are used in hybrid and electric vehicles.
- **Characteristics:**
  - High energy density
  - Good self-discharge rate (less than 2% per year)
  - Medium DOD (typically up to 50%)
  - Higher cost compared to lead-acid batteries
- **Use cases:** Hybrid and electric vehicles, backup power for small systems.

## 4. Sodium-Ion Batteries

- **Description:** Sodium-ion batteries are a new type of battery that's gaining attention due to their potential environmental benefits.
- **Characteristics:**
  - Similar energy density to lithium-ion batteries
  - Lower cost compared to lithium-ion batteries
  - Still in the early stages of development
- **Use cases:** Emerging market for renewable energy applications.

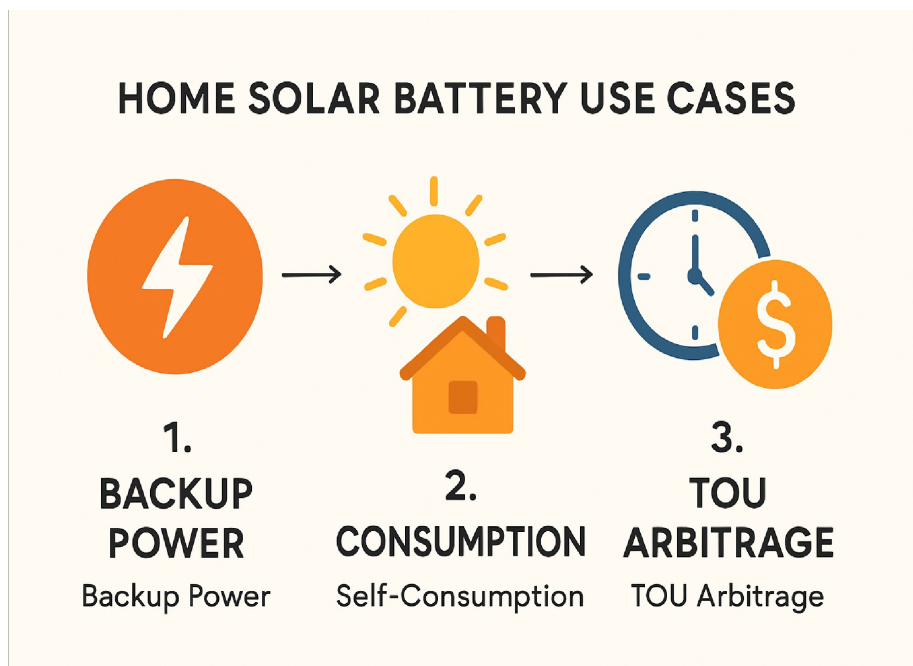
## 5. Flow Batteries

- **Description:** Flow batteries are a type of battery that stores energy in liquid electrolytes.
- **Characteristics:**
  - High DOD (typically up to 90%)
  - Long lifespan (up to 20 years)
  - High self-discharge rate
  - Higher cost compared to traditional batteries
- **Use cases:** Large-scale renewable energy applications, grid storage, and peaking power plants.



## Battery Selection Guide

Battery Type	Energy Density	Self-Discharge Rate	DOD	Cost
Lead-Acid	Low	High	Limited	Low
Lithium-Ion	High	Low	High	Medium-High
Nickel-Metal Hydride	Medium	Good	Medium	Medium-High
Sodium-Ion	Similar to Lithium-Ion	Unknown	Unknown	Emerging
Flow Batteries	High	High	High	High



## Part 3: Why Add a Battery? The Use Cases

Adding a battery is not just about one thing; it's about unlocking several layers of energy independence and financial benefit.

### 1. Backup Power (The Security Blanket)

This is the most common reason. When the grid goes down, your solar panels automatically shut off for safety reasons (anti-islanding).

**A battery, paired with a hybrid inverter, creates a microgrid for your home, allowing your panels to continue generating power and charging the battery, while the battery powers your essential loads. This provides true energy resilience during an outage.**

### 2. Self-Consumption (The Efficiency Play)

In many areas, net metering rates are declining, meaning the utility pays you less for your excess solar power than they charge you for their power.

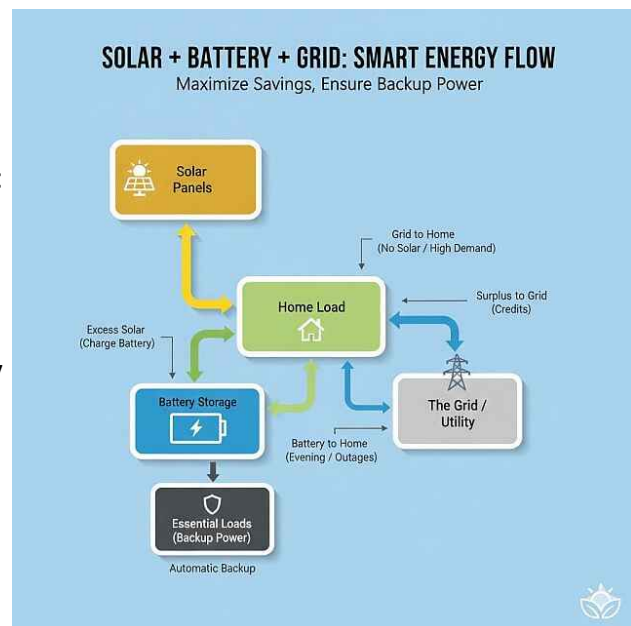
The battery allows you to store your midday solar power and use it in the evening when you get home and the sun is setting.

***This maximizes the value of every electron you generate.***

### 3. Time-of-Use (TOU) Arbitrage (The Financial Strategy)

If your utility company charges different rates based on the time of day (e.g., peak rates from 4 PM to 9 PM), your battery can be programmed to:

- Charge from your solar panels during the day (low-cost generation).
- Discharge to power your home during the expensive **peak hours** (avoiding high utility rates).
- Recharge from the grid during **off-peak hours** (if cheaper than solar generation).



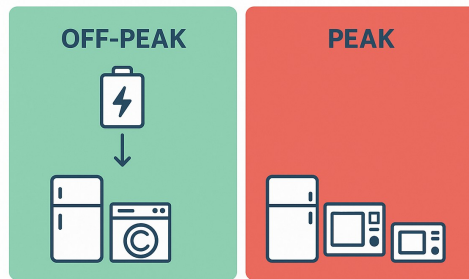
This intelligent cycling can lead to significant savings on your monthly utility bill.

Here is where smart planning changes the game. By making most of your Solar Window every day, you use the power

your system creates immediately = daily savings + maximum ROI.

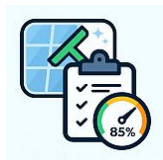
This system is called **Load Shifting**. You schedule power hungry appliances to run during this window period, normally between 10am and 3pm, when the system typically creates most power.

### LOAD SHIFTING STRATEGY



### Appliance Scheduling Template for Batteries

Appliance	Scheduled On	Scheduled Off	Cycle Duration
Water Pump (DC Power)	[Insert Time]	[Insert Time]	[Insert Duration]
Electric Bike Charger	[Insert Time]	[Insert Time]	[Insert Duration]
Backup Power System	[Insert Time]	[Insert Time]	[Insert Duration]
Washing Machine	[Insert Time]	[Insert Time]	[Insert Duration]
Tumble Dryer	[Insert Time]	[Insert Time]	[Insert Duration]
Heating/Cooling System	[Insert Time]	[Insert Time]	[Insert Duration]
	[Insert Time]	[Insert Time]	[Insert Duration]
	[Insert Time]	[Insert Time]	[Insert Duration]



## Tips and Variations

- Adjust the cycle duration based on your appliances' energy consumption patterns.
- Consider implementing a "load shifting" strategy to optimize energy storage during peak demand periods.
- Use this guide as a starting point and adjust the settings according to your specific battery system's requirements.



## Part 4: The Battery Warranty: Cycles and Throughput

Just like solar panels, batteries come with a warranty, but the terms are slightly different and more complex. You need to look at three main components:

### 1. Warranty Period (Years)

**Typical Term:** 10 years.

### 2. Minimum Capacity Retention

**What it is:**

A guarantee that the battery will retain a certain percentage of its original capacity by the end of the warranty period.

**Typical Guarantee:**

70% to 80% of original capacity after 10 years.

### 3. Cycle or Throughput Guarantee

**What it is:**

A guarantee of the total number of charge/discharge cycles (e.g., 6,000 cycles) or the total energy throughput (e.g., 30 MWh) the battery can handle over the warranty period.

**Consumer Takeaway:**

This is the most important metric for heavy users.

- If you cycle your battery once a day, 6,000 cycles is over 16 years of use.
- If you exceed the cycle or throughput limit before the 10-year mark, the warranty may be voided.
- Always choose a battery with a cycle or throughput guarantee that comfortably exceeds your projected usage.

## Conclusion: Storing Your Sunshine

**The solar battery is the final piece of the puzzle for a truly resilient and optimized home energy system. It transforms your solar array from a daytime generator into a 24/7 power source.**

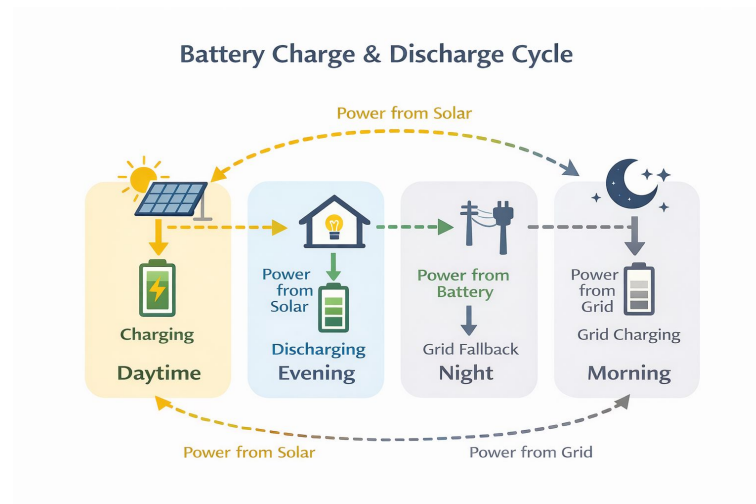
By understanding the difference between **Capacity (kWh)** and **Power (kW)**, recognizing the safety and longevity benefits of LFP chemistry, and choosing a warranty that covers your usage, you are taking the ultimate step toward energy independence.

From consumer to prosumer...

You are no longer just using solar; you are mastering your energy flow. And that, my friend, is a powerful feeling.

"Don't just chase the light; capture it. The difference between a dreamer and a pioneer is a solar panel."

— Zane 'The Spark' Kincaid, Energy Consultant



## AUTHOR'S NOTE

Thank you

for joining us on this journey!

We hope that these guides have proved helpful in finding your place in the sun and making the most of it.

But this is not the end, my friend!

Visit our website

[www.navigatingsolar.com](http://www.navigatingsolar.com)

for further exploration into the world of solar,  
where you will find

- several more **interactive tools**,
- trusted links to reputable sources,
- **blog articles** on the latest solar news and trends
- and innovations that power a future greener in energy production.

[Sign up for our newsletter](#)

to be delivered to your inbox.

(No fees, No sign-up).

We despise spam, and cherish privacy — you details will be safe.

This automatically places you on our VIP members mailing list That means, when we hear of a great deal or the next WOW thing to hit the market, you will be the first to be informed about it This way, you will never miss anything important or valuable regarding solar.



Brought to you by

---

# NavigatingSolar.com

---

The All-You-Need-&-Need-Know TOOLKIT  
for going Solar

Author : M. Styles / Edition: 1.0 / Published: 2025

[www.navigatingsolar.com](http://www.navigatingsolar.com)

[contact@navigatingsolar.com](mailto:contact@navigatingsolar.com)

